



Snowball Derby & Snowflake 100

COMPETITOR INFORMATION

FIVE FLAGS SPEEDWAY November 30 – December 3, 2023



SCHEDULE

Wednesday, November 29th

- 9am Rig Parking by Line-Up Order in Parking Lot
- 11am Tech Opens for Blizzard and Allen Turner Top 10
- 5pm Cone Up at Tech Line - Tech closed to all cars after cone
- 6pm Qualifying Draw / Chili for Charity
- 8pm Green Flag Pit Party – Live Music
- 10pm Pits Closed

Thursday, November 30th

- 8am Pits Open
- 9am Late Model Driver/Crew Chief Meeting
- 10am-11am Snowball Derby Practice
- 11am-12pm Snowflake Practice
- 12:15-1:15pm Snowball Derby Practice
- 1:15pm-2pm`Snowflake Practice
- 2pm-3pm Snowball Derby Practice
- 3pm-4pm Snowflake Practice

Friday, December 1st

- 8am Pits Open
- 9am Late Model Driver/Crew Chief Meeting
- 10am Snowball Derby Practice
- 10:45am-11:30am Snowflake Practice
- 11:00am Snowball Air Cleaners Must Be In Tech
- 12pm Tech Closes - Snowball Derby Qualifying Tires Moved
- 1pm-2pm Snowball Derby Practice
- 2pm-3pm Snowflake Practice
- 3pm Snowball Derby Cars to Pre-Qualifying Tech
- 6pm Snowball Derby Pole Qualifying

Saturday, December 2nd

- 8am Pits Open
- 8:30am Snowflake Qualifying Tires Moved
- 9am Late Model Driver/Spotter/Crew Chief Meeting
- 10am Snowflake Air Cleaners Turned In
- 10am-10:45am Snowflake Final Practice
- 11:30am Snowflake Cars to Pre-Qualifying Tech**
- 1pm-1:45pm Snowball Derby Final Practice
- 3pm Snowflake 100 Qualifying
- Snowflake Last Chance Race 50 Laps / Transfer 4
- Snowball Derby Last Chance Race 50 laps / Transfer 4
- 7pm Allen Turner Hyundai Snowflake 100

Sunday, December 3rd

- 7am Pits Open for Crew Members Only
- 9am All Haulers Must Be Removed from Pits
- 9am Mandatory Driver/Spotter/Crew Chief Meeting
- 10am Worship Service on Frontstretch
- 11:30am Engine Warm-Ups - Cars to Grid
- 12:00pm Snowball Derby Class Photo on Frontstretch Stage
- 12:15pm Driver Introductions
- 12:45pm Invocation - National Anthem
- 1:00pm 56th Annual Snowball Derby 300 laps



GENERAL INFORMATION

Hauler Parking & Pit Ticket Sales



- Hauler staging begins at 4pm Tuesday thru the night. Please have them check in with attendant for your hauler parking pass and instructions on where to stage. Please make sure the hauler driver knows the car number and drivers name.
- Pit ticket sales will be open on Tuesday from 1-6pm and Wednesday from 8am-6pm. Please fill out a team form and leave an open check for team members arriving separately. Pit Pay will also be available to pre purchase passes.

Team Member Parking

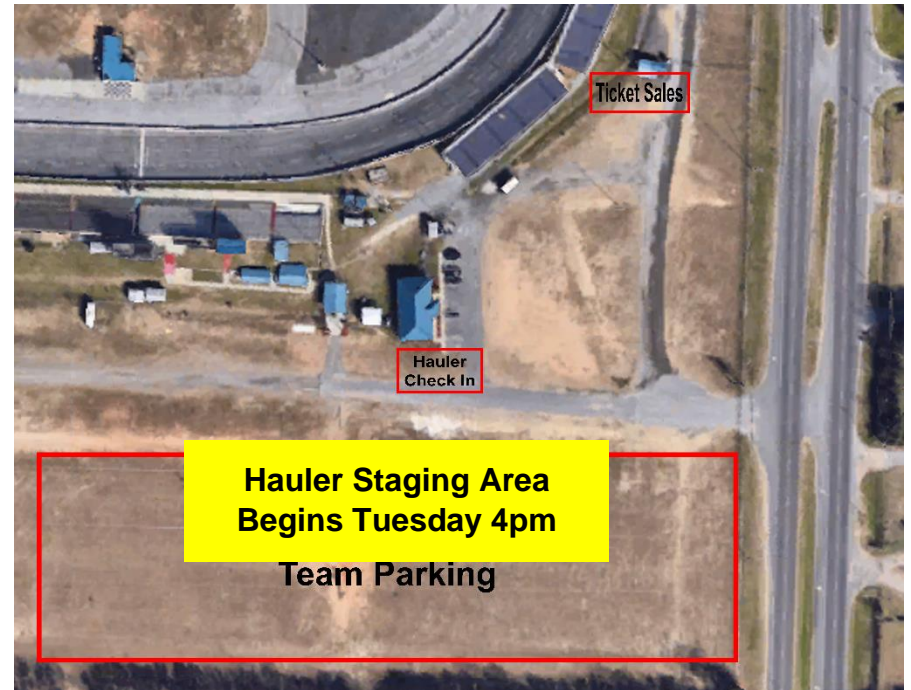
- Limited parking available at the speedway. Overflow parking available at the fairgrounds with free shuttle. Carpooling is strongly encouraged. No personal vehicles are allowed in the infield Thu-Sat due to limited space, no exceptions, please plan accordingly to shuttle items. Personal vehicles are allowed on Sunday with a vehicle pass only which can be purchased at Pit Ticket booth. Passes are limited due to space. Teams competing on Sunday will receive one vehicle pass each. Must park on outside of ¼ mile

Golf Carts

- Standard Golf Carts/ATV's are allowed with an ATV pass which can be purchased at the Pit Ticket booth. No Side by Side or oversized atv's allowed. On Sunday, all competing teams will be given one ATV pass. These are the only ATV's allowed in the facility on Sunday. Passes can be revoked for reckless use or blocking active areas.

UPS/FEDEX

- If you need to ship items to the race track the address is 7451 Pine Forest Rd. Pensacola, FL. 32526. Packages will be brought to infield tire building once delivered for pickup.



Contact Info

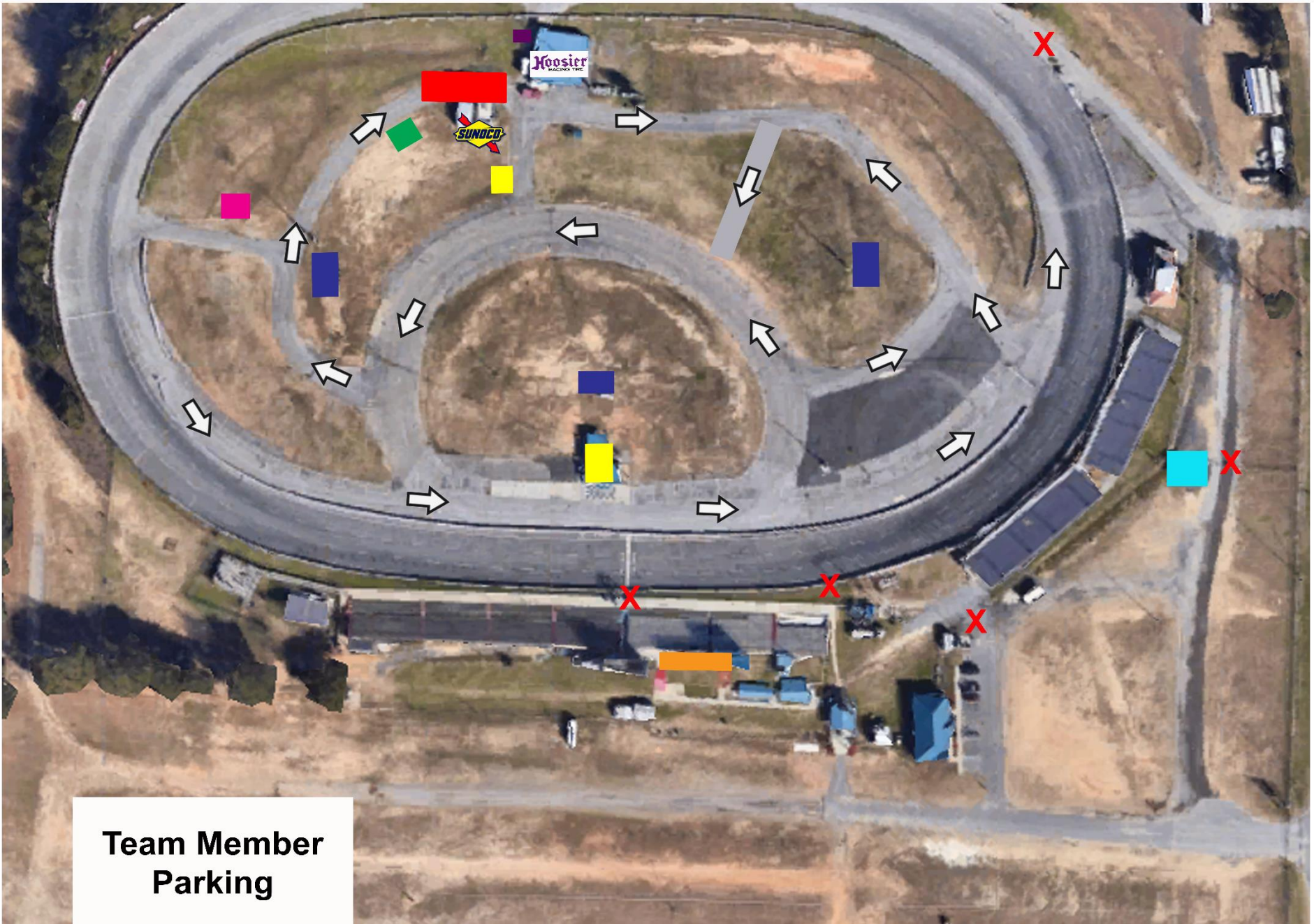
Track Office – 850-944-8400

Tim Bryant Promoter – 850-217-0539

Nicholas Rogers Competition Director – 850-418-0559

TRACK SERVICES / FACILITIES MAP

- | | | | | | |
|-----------------------------------------------------------------------------------------------|------------------------------------------------------------------------------------------------|-------------------------------------------------------------------------------------------------|--------------------------------------------------------------------------------------------------|-------------------------------------------------------------------------------------------------|----------------------------------------------------------------------------------------------------|
|  Concessions |  Tech |  Tires/Impound |  Entrance Gates |  Pit Tickets |  Spotters Stand |
|  Restrooms |  Transponders |  Fuel Station |  Traffic Flow |  First Aid |  Oil Dump |



**Team Member
Parking**

GENERAL PROCEDURES

1. *NO CELLPHONES, SMART WATCHES OR BLUETOOTH DEVICES ALLOWED IN CARS AT ANYTIME OR YOU WILL BE DISQUALIFIED.*
2. **ALL THE WIRING INSIDE THE COCKPIT MUST BE USED AND SEALED WITH A TIE WRAP. ANY PLUG NOT BEING USED MUST HAVE A WEATHER PACK PLUG END INSTALLED, SILICONE UP AND TIE WRAPPED TOGETHER. NO UNPLUGGED WIRING OF ANY KIND ALLOWED, IF FOUND IT WILL BE AN AUTOMATIC DISQUALIFICATION.**
3. NO TAPE (ZERO) ALLOWED ON CAR EXCEPT FOR GRILL SCREEN AND FRONT BRAKE DUCTS. NO LIMITS TO AMMOUNT OF TAP ALLOWED ON GRILL
4. ***PER THE 2023 RULEBOOK NO COOL DOWN UNITS OF ANY TYPE PERMITTED AND WILL BE SUBJECT TO A SEVERE PENALTY.***
5. ALL CARS MUST COME THRU PRE-TECH BEFORE PRACTICE ON THURSDAY
6. LEAD INSPECTION WILL BE PART OF PRE & POST-RACE TECH AND IF A PIECE OF LEAD IS NOT PROPERLY PAINTED WHITE WITH CAR NUMBER IN RED OR BLACK MARKED ON ALL SIDES THE DRIVER WILL RECEIVE A \$1500.00 FINE ON 1ST OFFENSE AND WILL BE AN AUTOMATIC DISQUALIFICATION ON THE 2ND OFFENSE. ANY LOST WEIGHT WILL RESULT IN A \$25 PER POUND FINE TO THE DRIVER. NO TUNGSTEN OR SIMILAR WEIGHT ALLOWED.
7. **ALL TECH ISSUES MUST BE FIXED AND MARKED OFF BEFORE THE END OF PRACTICE (SUPERS FRIDAY BY 12:00PM & PROS SATURDAY BY 11:00AM) OR A PENALTY OF THE SLOWEST OF THE TWO QUALIFYING LAPS WILL BE ACCESSED.**
8. ***ALL LATE MODEL CARBURETORS WILL BE CHECKED IN THE TECH LINE ON WEDNESDAY. PLEASE HAVE RF CARB STUD DRILLED. HAVE CARB LOOSE WHEN YOU COME TO TECH AND BRING TOOLS TO REINSTALL FOR SEAL. IF YOU HAVE TO REMOVE CARB AFTER IT IS THE TEAMS RESPONSIBILITY TO HAVE IT RESEALED BEFORE QUALIFYING TECH.***
9. **AIR CLEANERS MUST BE TURNED IN BY (SUPERS 11:00AM FRIDAY AND PROS 10:00AM SATURDAY) OR THE SLOWEST OF THE TWO QUALIFYING LAPS.**
10. ***SUPER-LATE MUST PURCHASE 30 GALLON & PRO-LATE MUST PURCHASE 15 GALLON MINIMUM OF SUNOCO FUEL BEFORE QUALIFYING.***
11. **TIRE IMPOUND PROCEDURES ARE POSTED AND ALL TIRES IN THE IMPOUND AREA WILL BE STACKED 4 HIGH OR YOU WILL LOSE THEM! YOUR ONLY ALLOWED A TIRE GAUGE, TIRE TAPE AND AIR HOSE IN THE IMPOUND AREA. IT'S MANDATORY THAT YOUR CAR NUMBER BE ON WHEELS WITH A DECAL, NO PAINT PENS ETC....**
12. QUALIFYING GROUPS WILL BE POSTED AND YOU MUST BE ON TIME OR IT WILL RESULT IN A PENALTY OF THE SLOWEST OF THE TWO QUALIFYING LAPS.

GENERAL PROCEDURES CONT.

13. IF OFFICIALS OR SAFETY WORKERS ARE ON THE TRACK, NO SCUFFING TIRES NEAR THEM OR YOU WILL BE PARKED AFTER ONE WARNING.
14. ALL CARS MUST USE BLEND LINE ON TRACK AND APRON OFF TRACK TO PIT LANE AT ALL TIMES. NO SCUFFING TIRES ON PIT LANE.
15. MANDATORY SPOTTERS HAVE A SCANNER OR STAND-ALONE RADIO TO MONITOR RACE CONTROL ANYTIME CAR IS ON TRACK! ALL SPOTTERS THAT CAN NOT MONITOR RACE CONTROL WILL RESULT IN CAR BEING BLACK FLAGGED.
16. WHEN COMING TO QUALIFYING TECH ALL CARS MUST HAVE AXLES INSTALLED.
17. NO 4 WHEELERS OR GOLF CARTS BLOCKING TECH STATION, TIRE STATION, WALK WAYS OR YOU WILL LOSE IT FOR WEEKEND.
18. **ALL TEAMS MUST HAVE A FIRE EXTINGUISHER IN THEIR PIT AREA AT ALL TIMES. MUST BE OUT AND EASILY ACCESIBLE ON PIT ROAD WHEN FUELING CAR.**

TIRE PURCHASING PROCEDURES

- SUPER LATE MODELS WILL BE ALLOWED TO PURCHASE THREE SETS OF PRACTICE TIRES FOR THE EVENT.
- PRO LATE MODELS WILL BE ALLOWED TO PURCHASE TWO SETS OF PRACTICE TIRES FOR THE EVENT.
- TIRE SELECTION WILL BE DONE BY DRAW. TEAMS WILL DRAW A NUMBER AND THAT WILL BE THE STACKS THAT THEY RECEIVE. THERE WILL BE MINIMAL AVAILABILITY OF TIRES TO BE SWAPED. FURTHER DETAILS WILL BE GIVEN AT THE TIRE IMPOUND.
- WEDNESDAY
 - 12:00PM SUPER LATE MODEL PRACTICE & QUALIFYING TIRE DRAW
 - 1:30PM PRO LATE MODEL PRACTICE & QUALIFYING TIRE DRAW
- SATURDAY
 - 9:30AM SUPER LATE MODEL RACE TIRE DRAW FOR LOCKED IN TEAMS
 - FOLLOWING LCQ – RACE TIRE DRAW FOR TRANSFERS
- IF A TEAM REPRESENTATIVE IS NOT THERE WHEN YOUR NAME IS CALLED AN OFFICIAL WILL DRAW FOR YOU.
- IN THE EVENT OF INCLEMENT WEATHER DRAW AND/OR MOUNTING MAY BE DELAYED. TEAMS WILL BE NOTIFIED THRU GROUP MESSAGE OF DETAILS.
-



NOTES FOR WEDNESDAY NOV 29th

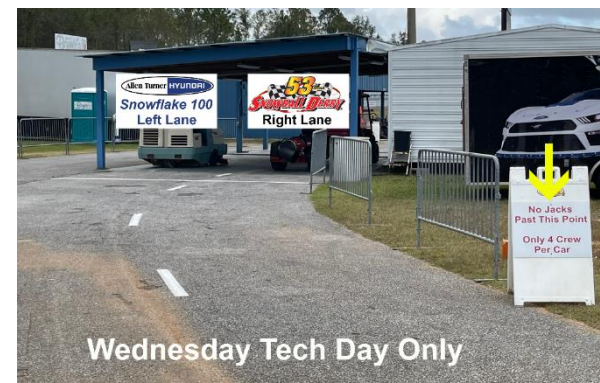
- **PRO'S LEFT LANE & SUPER'S RIGHT LANE FOR TODAY ONLY**
- NO HAULER DOORS (SIDE OR REAR) ARE ALLOWED TO BE OPENED UNTIL ALL HAULERS ARE PARKED AND ANNOUNCED AND AIR HORN BLOWN.
- **TOP 10 IN BLIZZARD SERIES & TOP 10 IN ALLEN TURNER SERIES POINTS GO DIRECTLY TO TECH. ALL OTHERS MUST PUT THEIR CARS ON JACK STANDS AND WAIT FOR SAFETY INSPECTION. DRIVER SAFETY GEAR SHOULD BE WITH CAR FOR INSPECTION. YOU WILL BE INSPECTED BY ORDER OF ENTRY.**
- **ONCE YOU PASS AND RECEIVE SAFETY INSPECTION SHEET YOU MAY THEN PROCEED TO TECH STATION BUT NOT BEFORE.**
- PLEASE HAVE TOP OF WINDSHIELD CLEAN WITH NO DECALS FOR WINDSHIELD BANNER.
- PLEASE NOTE TIRE DRAW TIMES FOR TODAY
- **ALL CARBURETORS WILL BE CHECKED IN THE TECH LINE ON WEDNESDAY. RF CARB STUD MUST BE DRILLED. HAVE CARB LOOSE WHEN YOU COME TO TECH AND BRING TOOLS TO REINSTALL AND HAVE SEALED. IF YOU HAVE TO REMOVE CARB IT IS THE TEAMS RESPONSIBILITY TO HAVE IT RESEALED BEFORE QUALIFYING TECH.**
- PICK UP TRANSPONDER AT TENT IN TECH LINE AND YOU WILL KEEP IT UNTIL FRIDAY AFTERNOON FOR PRO AND SATURDAY AFTERNOON FOR SUPERS.
- ONCE YOU ARE IN THE TECH INSPECTION AREA, A MAXIMUM OF 4 CREW MEMBERS AND DRIVER ALLOWED.
- **THERE WILL BE ABSOLUTLY NO RECHECKS UNTIL ALL CARS HAVE HAD THE CHANCE TO COME THRU AT LEAST ONE TIME. TECH WILL CLOSE AT 5:30PM.**
- QUALIFYING DRAW WILL BE HELD AT 6:00 AT THE STAGE. IF A REPRESENTATIVE IS NOT THERE SOMEONE WILL DRAW FOR YOU.

NOTES FOR THURSDAY NOV 30th

- TECH STATION WILL OPEN AT 8:00AM AND WILL CLOSE AT 7:00PM FOR ALL SUPER AND PRO LATE MODELS TODAY

NOTES FOR FRIDAY DEC 1st

- TECH STATION WILL CLOSE AT 12:00PM FOR ALL SUPER AND PRO LATE MODEL RECHECKS. A SNOWBALL TIRE REPRESENTATIVE MUST BE AT THE TIRE IMPOUND TO MOVE QUALIFYING TIRES TO TECH STATION. IF NOT THERE WHEN NAME CALLED MAY RESULT IN SLOWEST OF THE TWO QUALIFYING LAPS.
- SUPER AIR CLEANERS MUST BE TURNED IN BY 11:00AM AND IT WILL BE PUT ON IN QUALIFYING LINE, BRING YOUR CAR TO PREQUALIFYING TECH WITHOUT AN AIR FILTER ON THE CAR OR COULD RESULT IN A PENALTY OF THE SLOWEST OF THE TWO QUALIFYING LAPS.
- **QUALIFYING GROUPS ARE POSTED. PLEASE BE ON TIME OR IT MAY RESULT SLOWEST OF THE TWO QUALIFYING LAPS. 2800 AND 58.0 AFTER QUALIFYING. MUST HAVE IGNITION BOX CLEANED WITH BRAKE CLEAN AND BAR SET WITH ALL TAPING DONE PRIOR TO TECH. AFTER TECH NOTHING BUT AIR PRESSURE AND GENERATOR PLUGGED IN WITH EXHAUST POINTED AWAY FROM CARS. A MAXIMUM OF 4 CREW MEMBERS AND DRIVER AT EACH CAR OR COULD RESULT IN A PENALTY OF THE SLOWEST OF THE TWO QUALIFYING LAPS. YOU MAY COVER FRONT AND REAR WINDOWS ONLY IN QUALIFYING LINE. REPEATED ISSUES ONCE IN QUALIFYING IMPOUND MAY RESULT IN PENALTIES.**
- DRIVERS MUST STAY WITH THE CAR UNTIL QUALIFYING IS OVER INCASE HE/SHE GETS BUMPED TO THE LAST CHANCE RACE. ONLY 1 CREW MEMBER MAY CHECK PRESSURES, STAGGER (no jacks) AND REMOVE TAPE ONLY. **DO NOT GO TO THE CAR UNTIL THE NEXT CAR IS PARKED.**
- ***NO CELLPHONES, SMART WATCHES OR BLUETOOTH DEVICES ALLOWED IN CARS OR THE IMPOUND AT ANYTIME OR YOU WILL BE DISQUALIFIED.***
- **TOP 30 AND PROVISIONALS WILL GO DIRECTLY TO TECH STATION, DO NOT TAKE YOUR TIRES OFF UNTIL AN OFFICIAL INSTRUCTS YOU TO DO SO. TIRES WILL BE REMOVED AT THE TIRE STATION ONLY. TOP 5 WILL REPORT TO SCALES WITH DRIVER IN UNIFORM AND ANY OTHER RANDOM CARS INSTRUCTED TO DO SO.**



NOTES FOR SATURDAY DEC 2nd

- AT 8:30AM A SNOWFLAKE TIRE REPRESENTATIVE MUST BE AT THE TIRE STATION TO MOVE QUALIFYING TIRES TO TECH STATION. IF NOT THERE WHEN NAME IS CALLED, COULD RESULT IN A PENALTY OF THE SLOWEST OF THE TWO QUALIFYING LAPS.
- TECH STATION WILL CLOSE AT 11:00AM FOR ALL SUPER / PRO LATE MODELS TODAY!
- DRIVERS MEETING AT 9:00. TOP 30 SLM TEAMS WILL SELECT PIT STALLS AND RECEIVE PARKING PASS/ATV PASS AFTER MEETING. CREW CHIEF MUST SIGN FOR PASSES
- AT 9:30AM SNOWBALL RACE TIRE DRAW (Top 30 in order).
- PRO LATE AIR CLEANERS MUST BE TURNED IN BY 10:00AM AND WILL BE PUT ON IN QUALIFYING LINE, BRING CAR TO PREQUALIFYING TECH WITHOUT AN AIR FILTER ON THE CAR OR COULD RESULT PENALTY OF THE SLOWEST OF TWO QUALIFYING LAPS.
- QUALIFYING GROUPS ARE POSTED. **DUE TO CAR COUNT PLM QUALIFYING TECH WILL BEGIN AT 11:30.** PLEASE BE ON TIME OR IT MAY RESULT SLOWEST OF THE TWO QUALIFYING LAPS. 2800 AND 58.0 AFTER QUALIFYING. MUST HAVE IGNITION BOX CLEANED WITH BRAKE CLEAN AND BAR SET WITH ALL TAPING DONE PRIOR TO TECH. AFTER TECH NOTHING BUT AIR PRESSURE AND GENERATOR PLUGGED IN WITH EXHAUST POINTED AWAY FROM CAR.
- A MAXIMUM OF 4 CREW MEMBERS AND DRIVER WITH EACH CAR OR SUBJECT TO SLOWEST OF THE TWO QUALIFYING LAPS. YOU MAY COVER WINDOWS ONLY IN QUALIFYING LINE.
- ALL PRO CARS WILL BE IMPOUNDED. WE WILL GRID THE LCQ IMMEDIATELY AFTER QUALIFYING. ONLY 1 CREW MEMBER MAY CHECK PRESSURES, STAGGER (no jacks) AND REMOVE TAPE ONLY. **WAIT UNTIL THE NEXT CAR IS PARKED.**
- **NO CELLPHONES, SMART WATCHES OR BLUETOOTH DEVICES ALLOWED IN CARS OR THE IMPOUND AT ANYTIME OR YOU WILL BE DISQUALIFIED.**
- YOU MUST START LCQ ON YOUR QUALIFYING TIRES AND THE TOP 4 FROM EACH RACE WILL REPORT DIRECTLY TO THE SCALES FOLLOWING YOUR RACE. SNOWFLAKE CARS WILL BE ALLOWED 4 NEW TIRES, FUEL AND A SWAYBAR ADJUSTMENT ONLY.
- **SNOWFLAKE 100** IS A (4) TIRE, 100 LAP RACE - FLATS MUST BE INSPECTED AND APPROVED BY AN OFFICIAL BEFORE TIRE IS TOUCHED BY A CREW MEMBER UNLESS IT'S ON THE RIM - AN UNAPPROVED TIRE CHANGE WILL RESULT IN A 2 LAP PENALTY PER TIRE. EVERYONE MUST PIT ON FRONT PIT LANE, PIT STALLS FIRST COME FIRST SERVE. **ALL CREW MEMBERS MUST STAY BACK BEHIND THE LINE IN PIT BOXES AT ALL TIMES UNTIL . IF NOT, THE DRIVER WILL BE ASK TO COME TO PIT LANE AND EXPLAIN FOR US! NO CELLPHONES, SMART WATCHES OR BLUETOOTH DEVICES ALLOWED IN CARS AT ANYTIME OR YOU WILL BE DISQUALIFIED.**

NOTES FOR SATURDAY DEC 2nd

- SPEEDING ON PIT LANE OR PIT STOP VIOLATION WILL RESULT IN A STOP AND GO PENALTY AT MINIMUM, PIT LANE SPEED IS 30MPH.
- TOP 5 TO VICTORY LANE, DRIVER'S MUST DRIVE CAR DIRECTLY TO TECH STATION AFTER VICTORY LANE CEREMONIES. NO CREW MEMBERS WILL BE ALLOWED TO TOUCH THE CAR OR REACH INSIDE THE CAR. PLEASE DON'T RUSH TO FRONTSTRETCH WHILE CARS ARE COMING OFF THE TRACK AFTER THE RACE!
- ALL HAULERS MUST EXIT TONIGHT UNLESS IN THE SNOWBALL AND THOSE MUST BE OUT BY 9:00AM SUNDAY WITH ALL TIRES IN TRAILER. SUPERS MAKE SURE YOUR CARS ARE PREPARED TODAY BECAUSE NO HOODS WILL BE RAISED AFTER PRERACE TECH ON SUNDAY. EACH TEAM STARTING THE SNOWBALL DERBY WILL GET ONE CAR PASS AND ONE ATV PASS FROM TECH. NO OTHER ATV'S ARE ALLOWED ON SUNDAY

NOTES FOR SUNDAY DEC 3rd

- ALL HAULERS AND ALL TIRES (THIS MEANS PUT THE CAR ON JACK STANDS) MUST BE OUT BY 9:00AM OR SUBJECT TO LOSS OF STARTING POSITION.
- MANDATORY DRIVER/SPOTTER MEETING AT 9:00AM, BOTH MUST SIGN IN AT SCALES.
- QUALIFYING TIRES WILL BE RELEASED IN STARTING ORDER AFTER THE DRIVERS MEETING IS OVER.
- ALL CARS MUST GO THRU TECH AND INTO THE IMPOUND AREA BY 11:30AM.
- TECH STATION WILL CLOSE AT 11:30AM SHARP!
- ENGINE WARMUPS WILL BE AT 11:30AM, ABSOLUTELY NO HOODS WILL BE REMOVED OR ANYTHING ELSE PERMITTED!!!!
- RACE TIRES WILL BE RELEASED WHEN CARS CLEAR TECH. NO SWAPPING TIRES ON WHEELS AFTER THEY LEAVE TIRE IMPOUND.
- DRIVER'S PHOTO ON STAGE AT NOON, INTROS AT 12:15 AND GREEN FLAG AT 1:00.
- **SNOWBALL:** (16) TIRE, 300 LAP RACE AND EVERYONE MUST PIT ON FRONT PIT LANE. A MAXIMUM OF (1) JACK, (2) TIRE GUNS AND (8) PEOPLE ALLOWED PER PIT STOP. **ALL CREW MEMBERS MUST STAY BACK BEHIND THE LINE IN PIT BOXES AT ALL TIMES. IF NOT, THE DRIVER WILL BE ASK TO COME TO PIT LANE AND EXPLAIN THAT FOR US!**
- SPEEDING ON PIT LANE OR PIT STOP VIOLATION WILL RESULT IN A STOP AND GO PENALTY AT MINIMUM, PIT LANE SPEED IS 30MPH.
- TOP 5 TO VICTORY LANE, DRIVER'S MUST DRIVE CAR DIRECTLY TO TECH STATION AFTER VICTORY LANE CEREMONIES. NO CREW MEMBERS WILL BE ALLOWED TO TOUCH THE CAR OR REACH INSIDE THE CAR. PLEASE DON'T RUSH TO FRONTSTRETCH WHILE CARS ARE COMING OFF THE TRACK AFTER THE RACE!



RACE PROCEDURES

Event: The race is 300 laps counting yellows for Supers, 100 non counting Pro. The last five laps must be green, but do not have to be consecutive. The event can go over the advertised number of laps to facilitate finish. If the event is extended to reach a finish you can lose laps (supers). If red flag is thrown once the leader has taken the white flag there will be a green, white, checker restart. The event is completed after three green, white, checker restarts

Initial Start: Flagman starts the race. Cars must stay in their lane until the start finish line. No jumping a start or passing before the start finish line. If a green flag lap is not completed on the initial start, there will be a total restart with all cars back in their original starting position except for any cars that are penalized, receive assistance or cars that pit.

Yellow Flag: There will be no racing back to the caution. When the yellow flag is displayed, all cars must slow to a caution pace and bunch up as quickly as safety allows so safety crews can work on track. All cars must **get single file and stay single file. No scuffing around workers on track. You will receive one warning thru your spotter, any further issues and you will be parked for the remainder of the event.**

Cars Involved in the Caution: Only car(s) directly involved in bringing out the caution will go to the tail of the field. Any cars that spin or stop but were not directly involved with the initial cause of the caution, will get their spots back if they do not go to pit road. Rough driving will not be tolerated. If contact with a car causes a yellow flag and the contact is not a "racing incident," that car will also be sent to the tail. Rough driving can result in penalties including being sent to the tail of the field or possible disqualification from the event. Cars stopping/spinning on the track to create their own caution will receive a two lap penalty.

Pitting Procedure: You must stay single file behind the pace car during the cautions unless you are coming to the pits. Please see controlled caution procedures for detailed instruction for Supers. Pro pits will be open second time by pit entrance behind the pace car. Only traditional tools and procedures may be used during a pit stop. Maximum of 8 crew members allowed to service car.

Crew cannot go to their car until it is completely stopped in their pits!

Pit Road Speed: The pit road speed limit is 30mph, if a car goes over the limit, they will be black flagged for a stop and go penalty. Pit road speeds will be enforced with radar guns. Cars may not pass the pace car on track at any time (unless directed to do so by the race director).

Red Flag: All cars must stop as quickly as safely possible when the red flag is displayed. Cars may go to the pits for crews to work on them, only after the officials have given them permission to do so. Cars pitting under red must re-start at the tail of the field.

Black Flag: Cars that receive the black flag must go to pit road immediately. If you do not go to pit road within 3 laps, your scoring will stop until the situation is rectified. Check with your spotter for guidance from race control.

Restart: Restart Line-up will revert to the last completed lap except cars under penalty. Lead lap cars will be placed in front of lapped cars under yellow. Restarts will always take place in the box coming off of turn 4. The restarts will be double file with lead lap cars in front of lapped cars. Cars will double up as they reach the finish line when given the **two to go signal** in the order they are running. Leader gets choice of inside or outside, everyone from third on back lines up how they are running. Once pacecar leaves the field the leader can steadily increase his speed until the box. Leader must fire first once in the box. No slowing, weaving, brake checking or decrease in acceleration once the pace car leaves the field. Cars must stay in their lane until the start finish line. No jumping a start or passing before the start finish line. If a green flag lap is not completed before a yellow comes out all cars should go back to their prior position except and any cars that are involved, penalized, receive assistance or cars that pit.

***THE CHOOSE CONE WILL NOT BE USED FOR THIS EVENT**

Wave Around: At the end of any caution period, any cars that are at the tail of the lead lap, behind the pace car but in front of the race leader will be "Waved Around" to pass the pace car and return to the tail of the lead lap cars, thus ensuring that the leader of the race will always start the race at the head of the field. **Cars using the "Wave Around" cannot pit during that caution period.**

Free Pass: At the time the caution comes out, the first car behind the leader 1 lap down will be deemed to be the Free Pass. If the Free Pass is involved in the caution it will go to next available car. The Lucky Dog will stay in their position throughout the caution period (**Free Pass may pit if they elect to**), until directed to pass the pace car or drop to the tail of the field and have your lap added manually. **Free Pass must always restart on the tail of the field.** No Free Pass will be awarded in the last 10 laps of the race

Slow Cars: Slow cars must stay on the top in the presence of lead lap cars during the race. Lapped cars that create problems for lead lap cars may be penalized. Lapped cars should let the leaders go by on the inside and then resume racing. **Lapped cars that are repeatedly passed on the outside during the race may be penalized.** Cars fighting to stay on the lead lap are not forced to yield to the leaders until the leader has passed them.



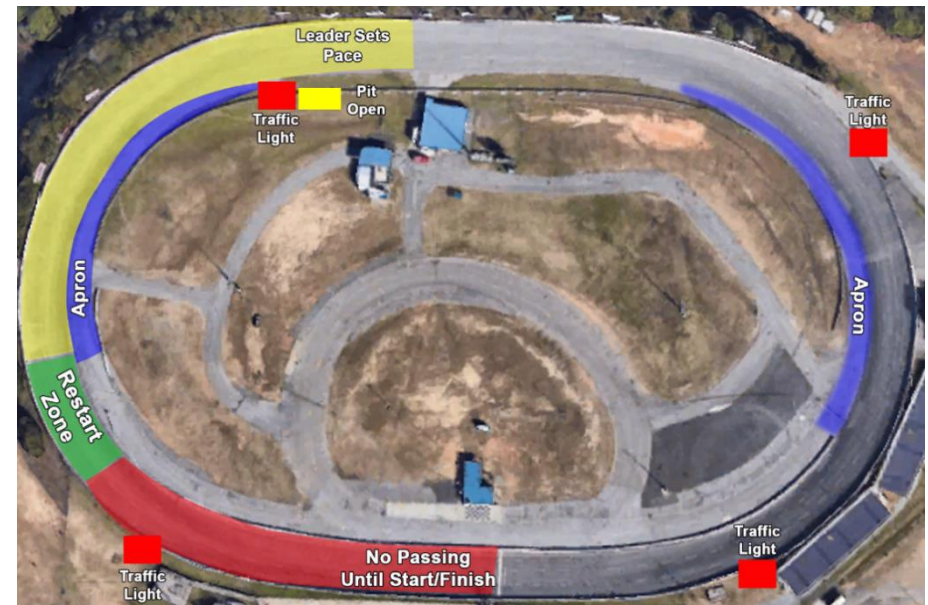
RACE PROCEDURES CONTINUED

Scoring: Transponders will be used for scoring. Teams must return the transponder to a scoring official before leaving pit road...There is a **\$400 PENALTY** for failure to turn in your operable transponder

Spotters: Spotters are required to be in the designated spotters stand during racing activities. Only one spotter per team is allowed in the spotter stand, no guest. Spotters must have the ability to listen to race control via a standard electronic scanner or dedicated radio at all times during the event. **The frequency is 461.2000.** Drivers should keep your spotter's patient and polite; spotters keep your drivers the same. Tower will be monitoring spotters during the race. Spotters must be respectful to officials and other spotters at all times. If spotter leaves or is removed from the spotters stand you will be parked.

Post-Race: The top three finishers to the front-stretch immediately following the completion of the race. Fourth and fifth go straight to tech. Other cars may be requested to go directly to tech. Crews may touch the cars only how and when they are directed to by series officials. Driver must drive car back to scales

Controlled Cautions: This event will use Controlled Cautions up to lap 290 unless declared a quickie yellow. **You can only take sticker tires during controlled cautions unless for an approved flat.** A quickie yellow may be used if we have not completed 25 laps since the last controlled caution for an issue that can be cleared quickly. Controlled Cautions will consist of a 3-Lap NON-COUNTING grace period. Teams pitting under a Controlled Caution will not lose a lap as long as they return to the track in the designated 3-Lap grace period. Pace car will pick up field in turn 2. Pits are closed until lineup is established. Once lineup is established race control will announce pit road open next time and pit open flagman will show green. You can enter pit road when you get to entrance. Do not advance. That 3-lap grace period is only the first three laps that pit road is open after the cars have been brought to pit road. After the grace period, cars will lose positions and laps. When pitting under a Controlled Caution, the cars that pit the first time by will return to the track in the same order they were scored running in the race prior to coming to pit road, relative to the other cars that pitted, and will line up behind the cars that did not pit, as long as they return to the track within the stated 3 lap window. Any car that returns to the track AFTER that 3-lap window will not get their position back, will begin losing laps and must fall to the tail. Any car that pits and does not return to the track prior to the field receiving the "one to go" signal must restart at the tail of all cars. A mandatory Caution will be thrown at the end of any run of 75 consecutive green flag laps. There will be **NO** mandatory caution thrown after lap 290.



Thank you for being a part of the 56th Annual Snowball Derby



Presented by



Please support our partners that help make this possible

